

IMDG Code for Windows

**Version 9
2008 Edition
Amendment 34-08**

Installation and Activation

Contents

1	Single user installation	1
2	Network installation	7
3	Activation	12

1 Single user installation

Insert the CD into your CD drive. The installation process should start automatically. If the CD does not auto-run, select *Start* and then *Run* and then enter *<CD drive letter>:Install.exe*.

Welcome to IMDG Code for Windows

You will see the Welcome to IMDG Code for Windows screen. You can, at any time, run the demo by clicking on the **View Demo** button.

Start the installation process



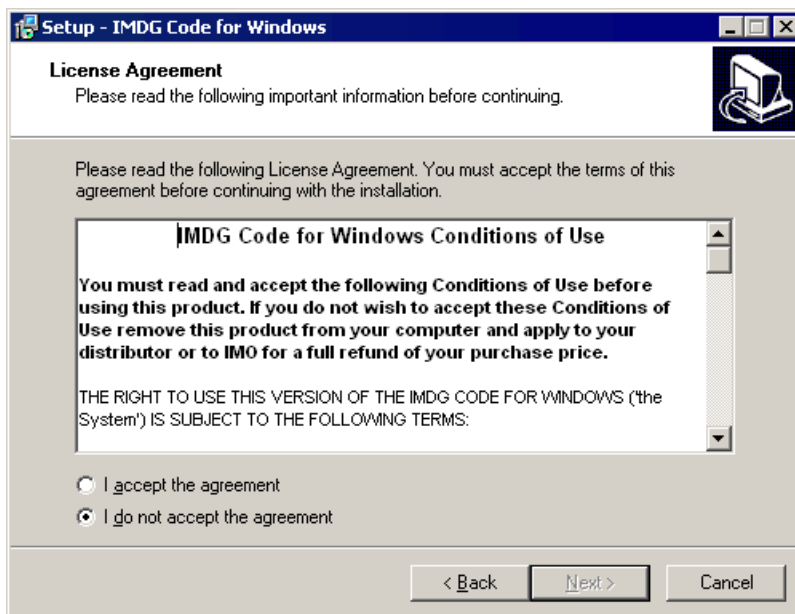
To start the installation process, click the **Install IMDG Code for Windows** button.

Welcome to the IMDG Code on CD Setup Wizard



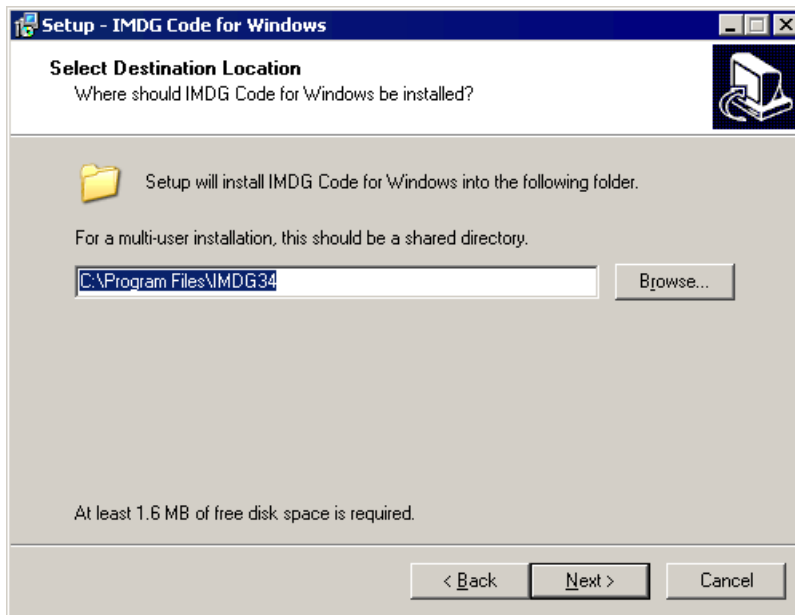
Click **Next** to continue.

License Agreement



Please read the conditions of use, and then select the **I accept the agreement** option. The **Next** button will become active. Click **Next** to continue.

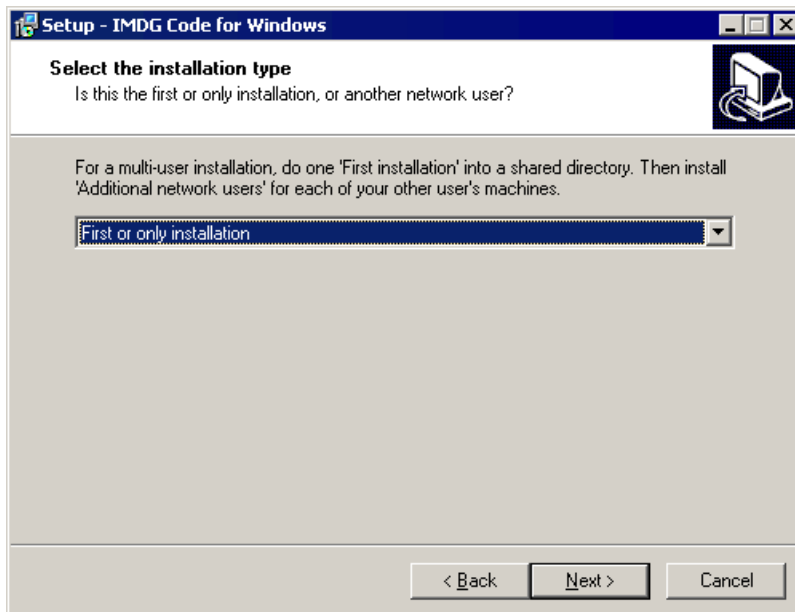
Select Destination Location



This is where the software will be installed. The default installation folder is C:\Program Files\IMDG33. If you want to install to a different location enter the path or use Browse. The maximum free disk space required is 16MB. Click **Next** to continue.

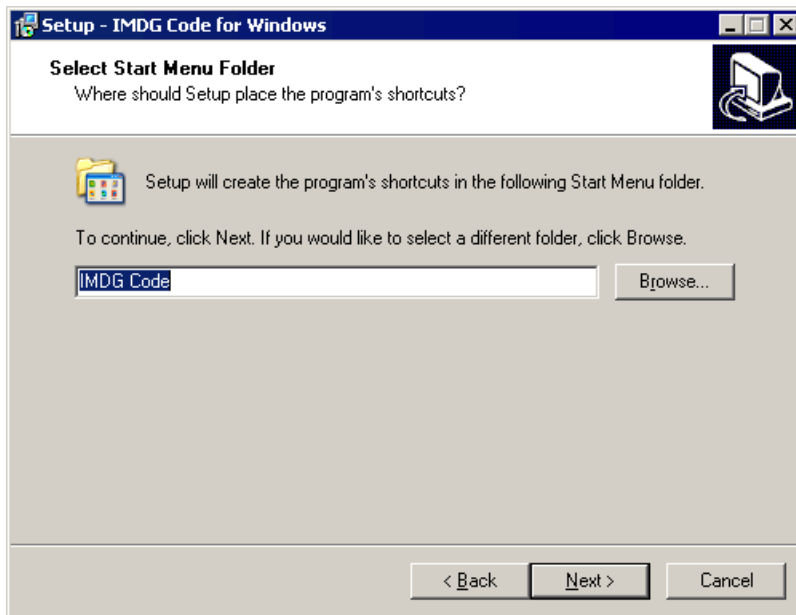
When installing additional network users, see the network installation instructions in Section 2 of this document.

Select the installation type



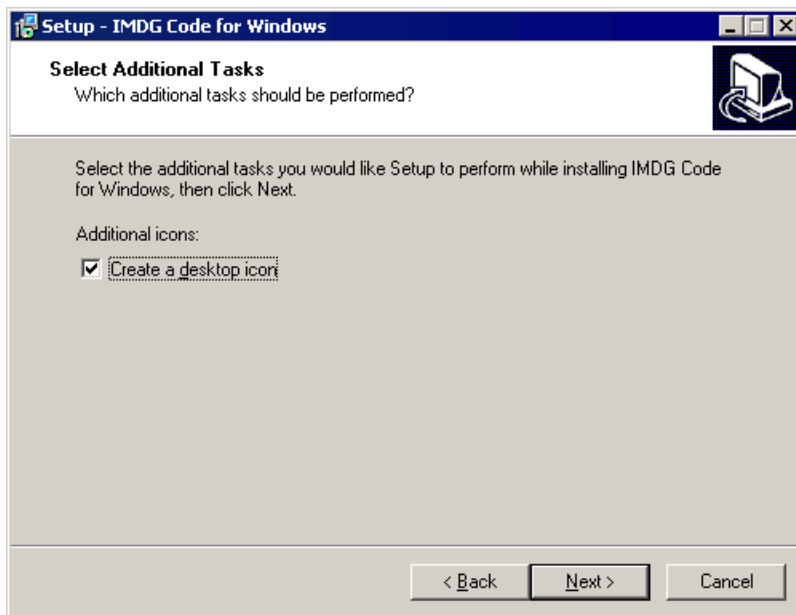
The default installation type is pre-selected as **First or only installation**. This will install the full system into your specified destination location. Click **Next** to continue.

Start menu folder



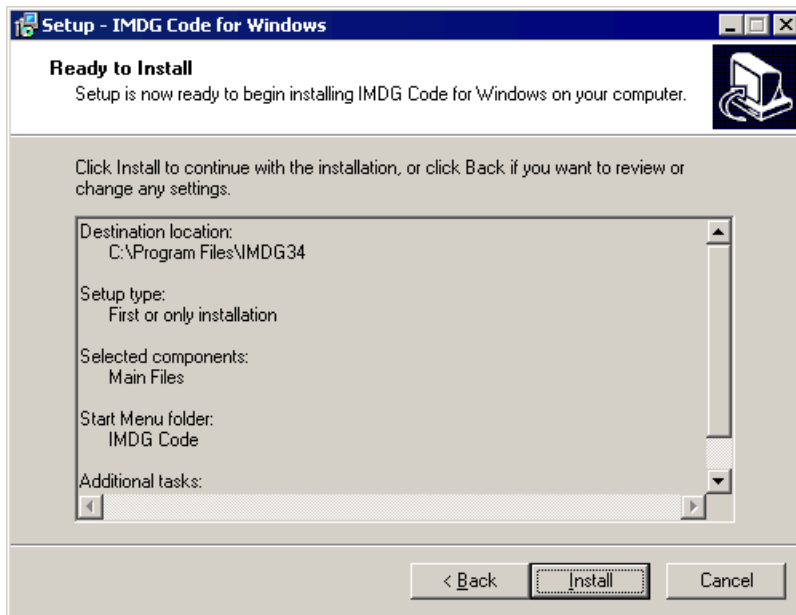
The default Start menu folder is IMDG Code. You may enter a different name or use Browse. Click **Next** to continue.

Select Additional Tasks



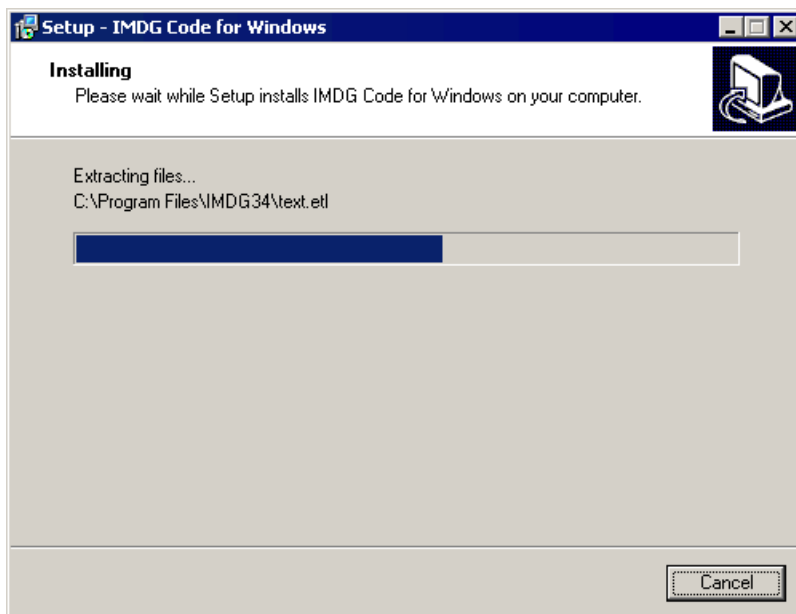
The default is to add the program short cut to your windows desktop. Click **Next** to continue.

Ready to Install



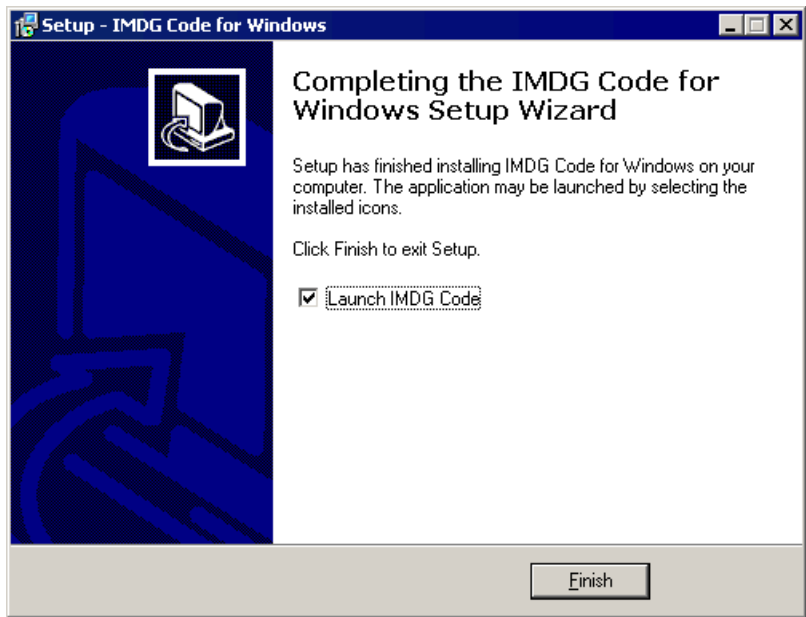
If you are satisfied with the installation settings click **Install**.

Installing



The program is now being installed. The blue bar shows the progress of the installation.

Launch the program



The program installation is now complete. Click Finish to launch the program. The program requires activation, see Section 3 later in this document.

Program short cut



The default is to add this short cut to your desk top. Use this to start the program.

2 Network installation

Host Installation

Go to the computer hosting the system, insert the CD and install a Single User installation. Please repeat exactly as in Section 1 above. Your additional network machines will require Read / Write access to this installation and will access it via a mapped drive letter or network share name.

Please note that every network user will require an activation code. However, you do **not** need activate the host installation unless someone intends to sit at that computer to use the program.

Additional network users

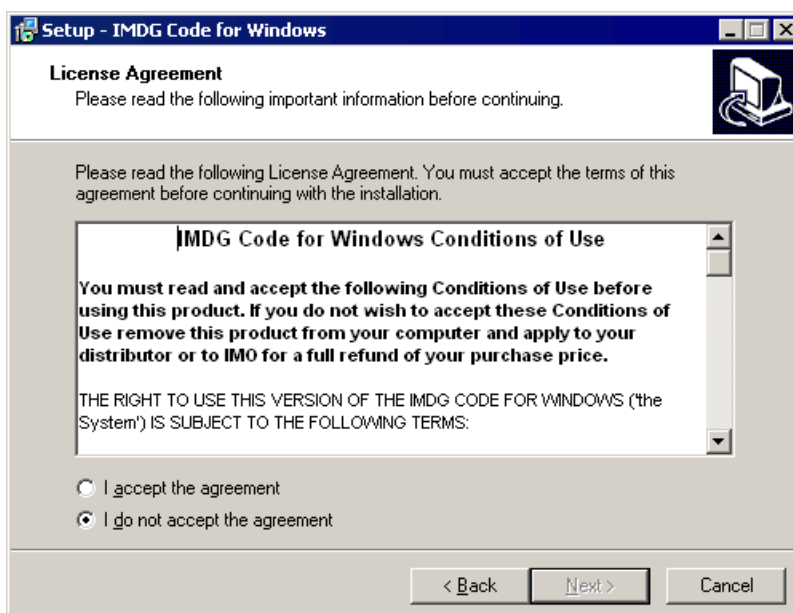
Go to each machine on the network from which the program is to be accessed, insert the CD and start the installation process.

Step 1 Welcome to the IMDG Code on CD Setup Wizard



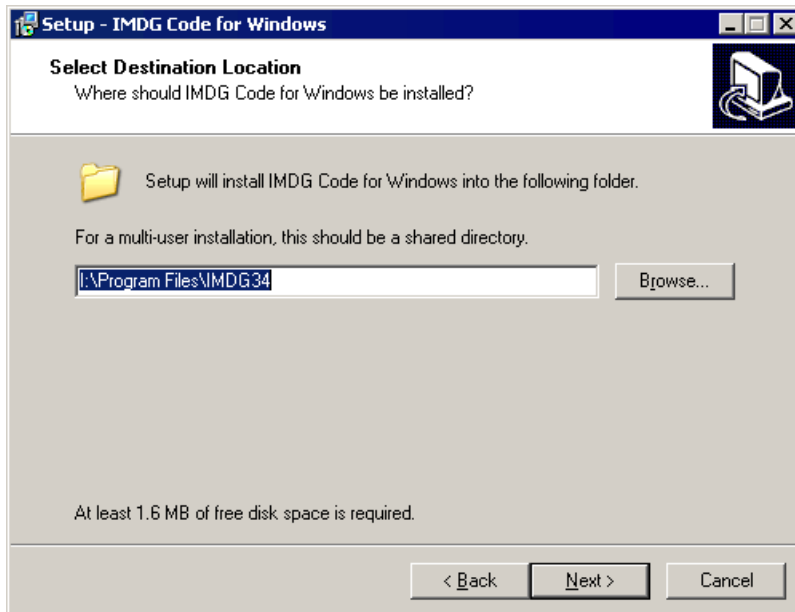
Click **Next** to continue.

Step 2 License Agreement



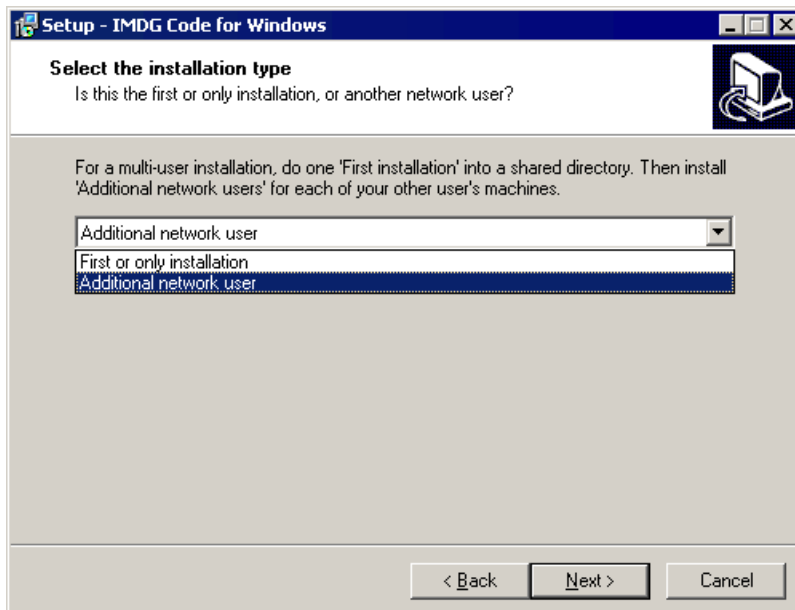
Please read the conditions of use and select the **I accept the agreement** option. The **Next** button will become active. Click **Next** to continue.

Step 3 Select Destination Location



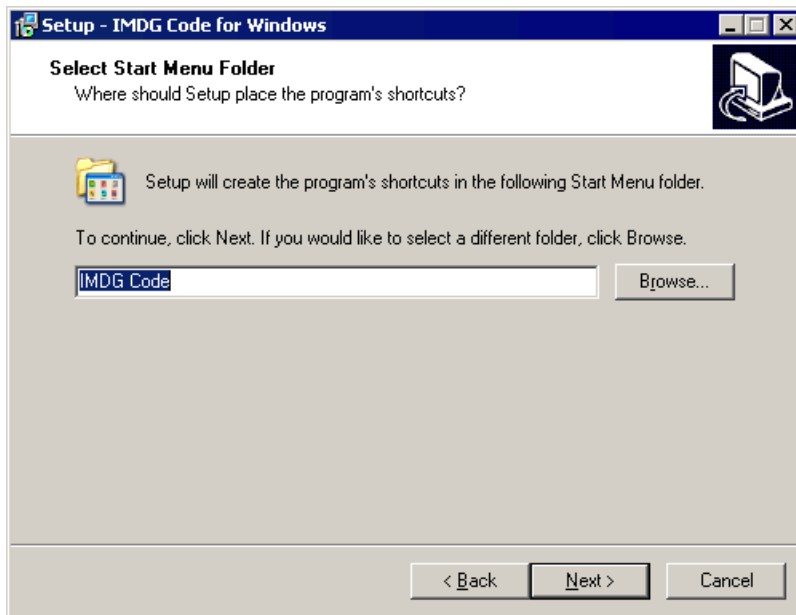
Enter the location of the system installed on the host using the mapped drive letter or network share name. Please note that this network user requires Read/Write access to this location.

Step 4 Select the installation type



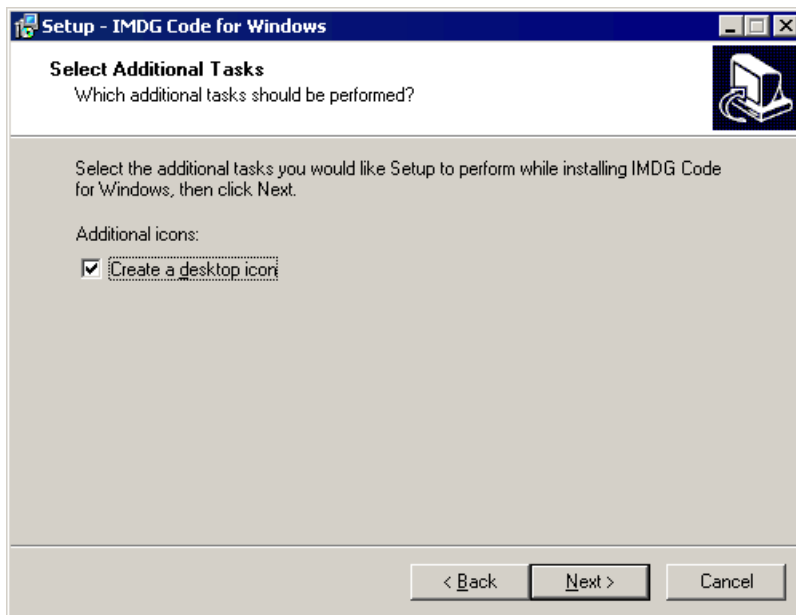
Click the list box indicator and select **Additional network user**. Click **Next** to continue.

Step 5 Start menu folder



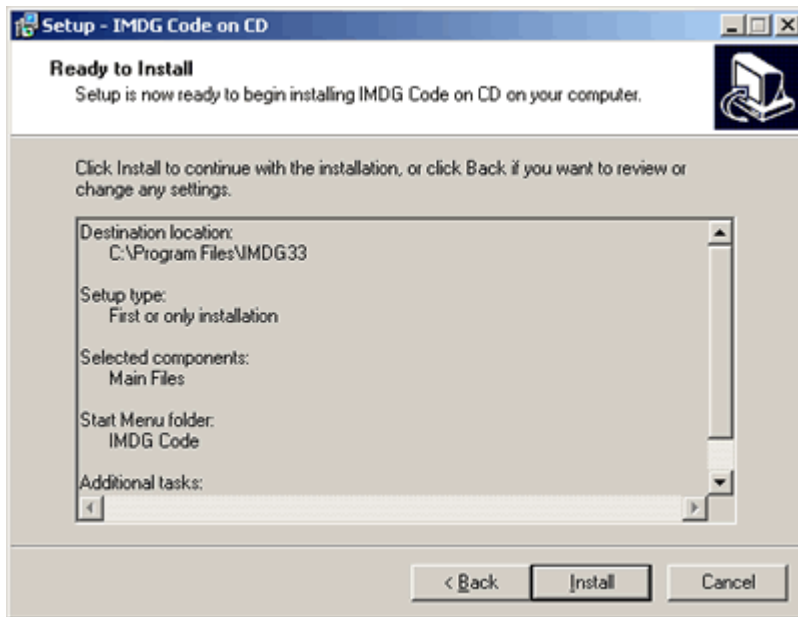
The default Start menu folder is IMDG Code. You may enter a different name or use Browse. Click **Next** to continue.

Step 6 Select Additional Tasks



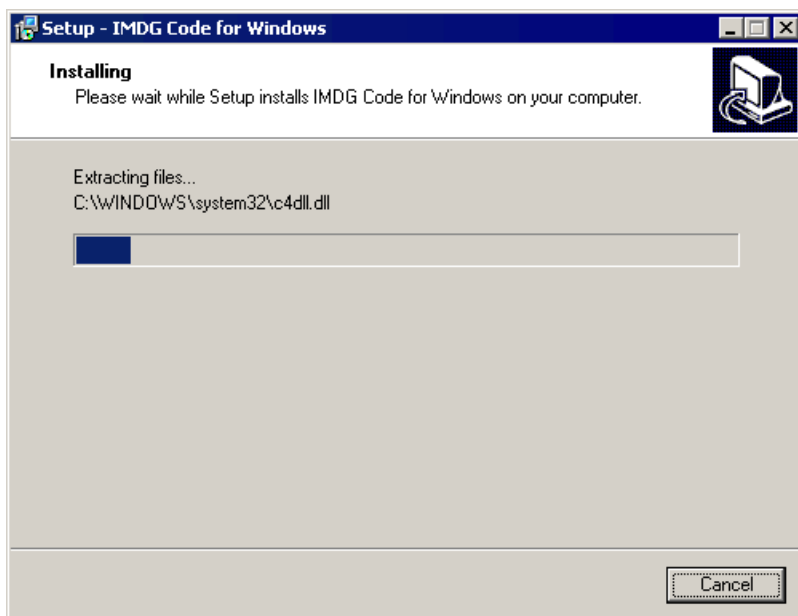
The default is to add the program short cut to your windows desktop. Click **Next** to continue.

Step 7 Ready to Install



If you are satisfied with the installation settings click **Install**.

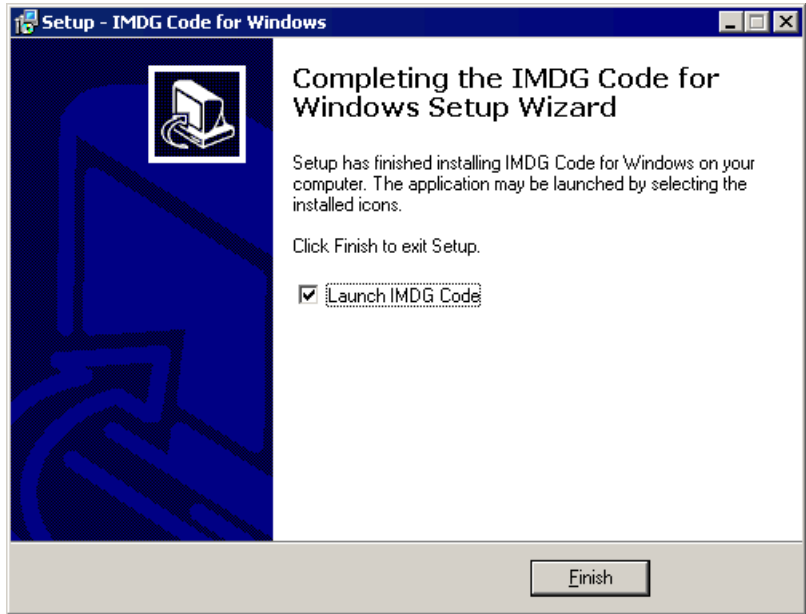
Step 8 Installing



The program is now being installed. The blue bar shows the progress of the installation. The Additional network user installation adds several systems files to the local windows system folder and adds a short cut to the network user's desk top. All other data and the program reside in the "First or only installation" that you installed on the "server".

When an update is announced all you need do is download the update and apply it to the installation on the "server". All network users will automatically see the new update.

Step 9 Launch the program



The program installation is now complete. Click finish to launch the program. The program requires activation, see Section 3 following.

Program short cut



The default is to add this short cut to each network user's desk top. Use this to start the program.

3 Activation

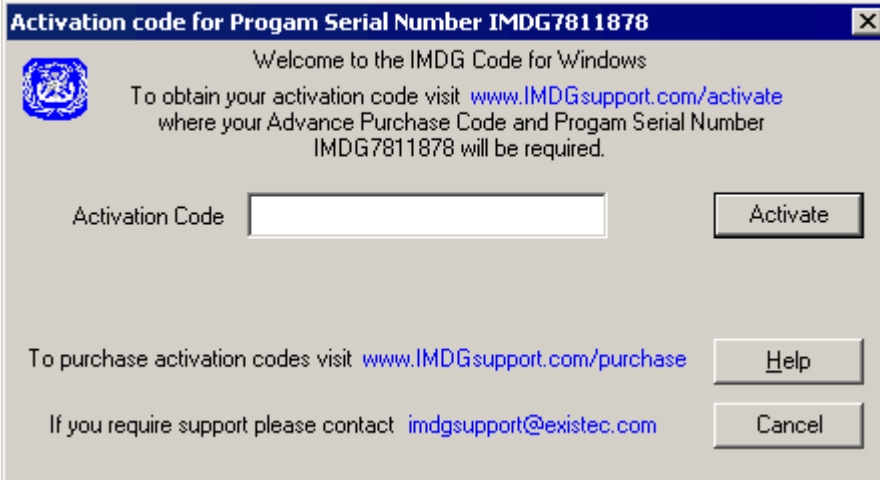
About activation

IMDG Code for Windows is an IMO licenced product and every computer on which it is installed requires an activation code before the software will operate. When you purchase this product you will be issued an Advance Purchase Code. This code holds your purchase details and is used to obtain your activation from the IMDG Support web site. If you purchased multiple copies then this code is used to obtain all your activations.

Every installation of IMDG Code for windows will display a unique program serial number. This serial number and your advance purchase code are required to obtain its activation code. This process is now described in detail.

Start the program and display your program serial number

Start the program. The splash screen will be displayed showing the Serial Number for that computer.



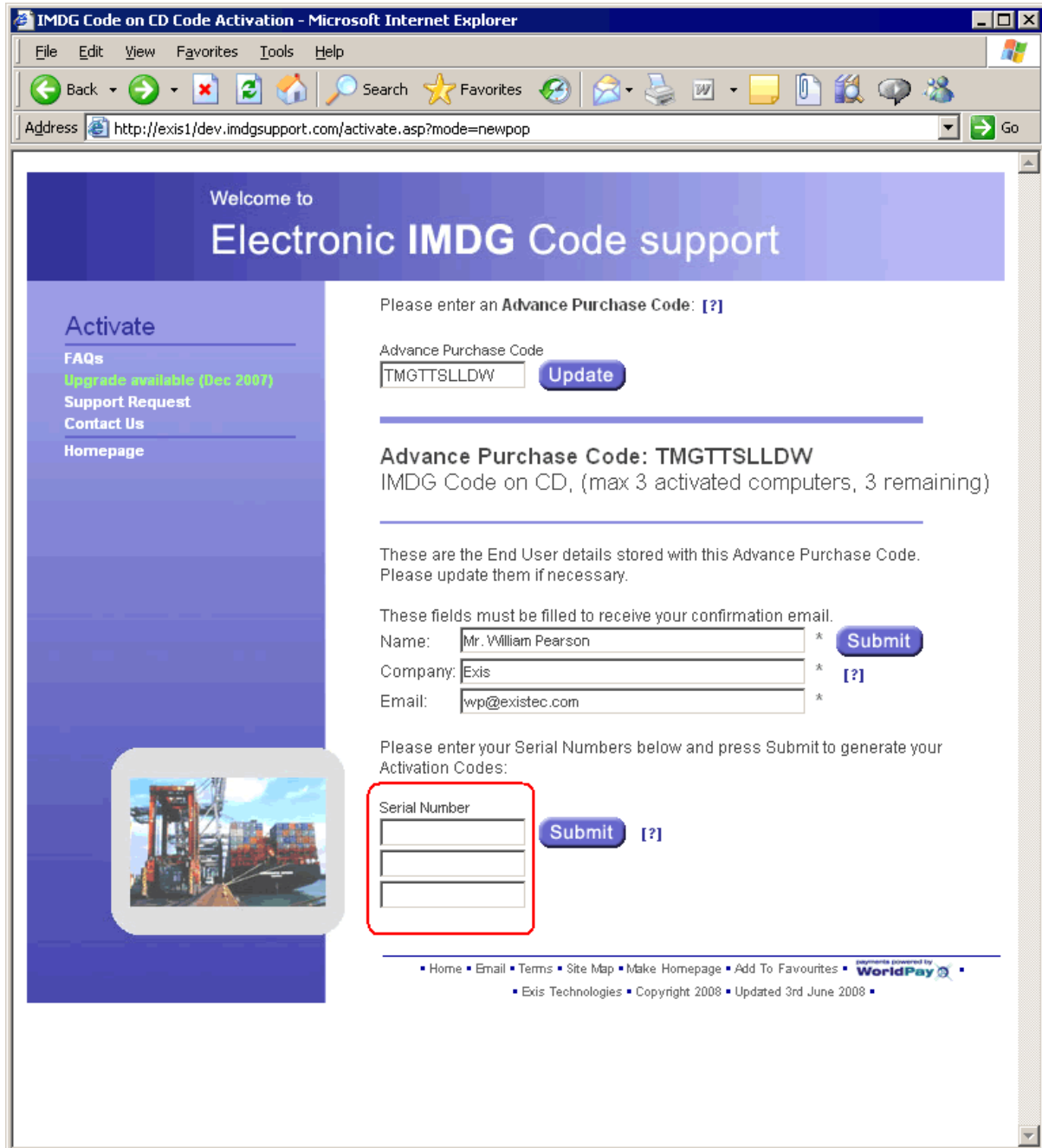
The screenshot shows a dialog box titled "Activation code for Program Serial Number IMDG7811878". The dialog box has a blue header bar with a close button (X) on the right. The main content area is light gray and contains the following text and elements:

- A small blue circular logo on the left.
- Text: "Welcome to the IMDG Code for Windows"
- Text: "To obtain your activation code visit www.IMDGsupport.com/activate where your Advance Purchase Code and Program Serial Number IMDG7811878 will be required."
- An input field labeled "Activation Code" with a white background and a gray border.
- An "Activate" button to the right of the input field.
- Text: "To purchase activation codes visit www.IMDGsupport.com/purchase"
- A "Help" button to the right of the purchase text.
- Text: "If you require support please contact imdgsupport@existec.com"
- A "Cancel" button to the right of the support text.

Visit the Activate page on the IMDG support web site

You obtain your activation code from the IMDG support web site. You require your Advance Purchase Code and the program serial number. The link to the Activate page is www.imdgsupport.com/activate Enter your Advance Purchase Code and press Update. Your details will be displayed. You can edit them and save by clicking Submit.

At the bottom of the screen you will see the entry box for your serial number. If you purchased multiple licences of the software there will be one serial number entry box for each licence purchased.



Display the activation code for your program serial number

In the first available entry box, enter your program serial number and press Submit.

Please enter your Serial Numbers below and press Submit to generate your Activation Codes:

Serial Number

[\[?\]](#)

Your activation code will be displayed. A confirmation email is sent automatically to the address shown in the End User details.


Please enter your remaining Serial Numbers below and press Submit to generate your Activation Codes:

Serial Number

[\[?\]](#)

Activation Codes issued for code TMGTTSLLDW:

Serial Number	Activation Code	Date Issued	Status
IMDG7811878	41120900	11 Aug 2008 (New)	Active

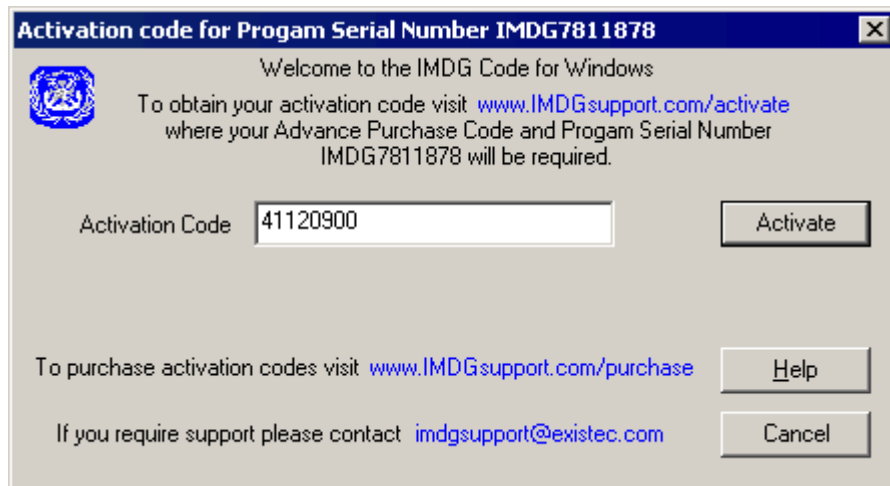
[Home](#)
[Email](#)
[Terms](#)
[Site Map](#)
[Make Homepage](#)
[Add To Favourites](#)


[Exis Technologies](#)
[Copyright 2008](#)
[Updated 3rd June 2008](#)

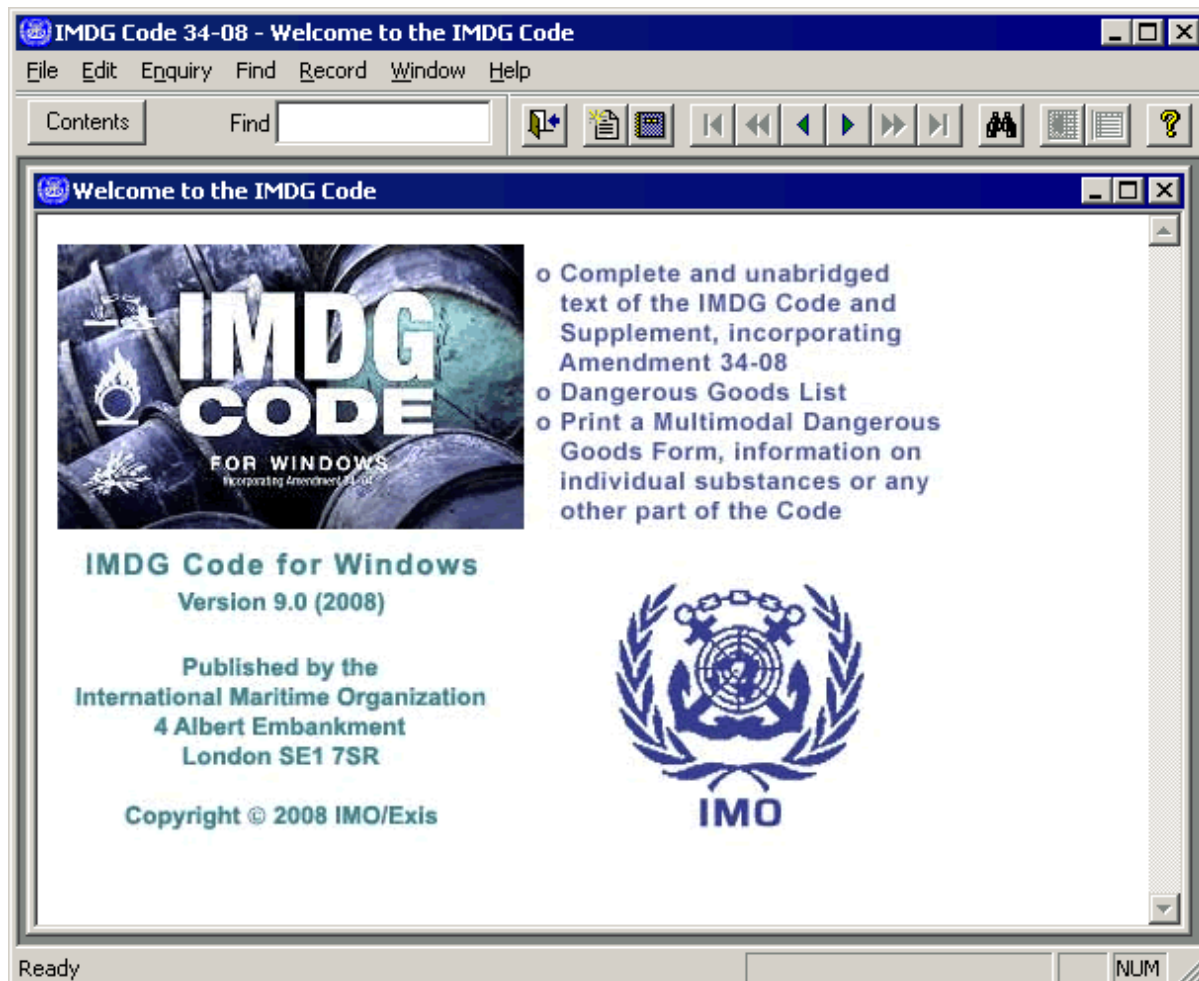
Make a note of your activation code. It is recommended that you "copy and paste" this code into the software.

Enter the activation code into IMDG Code for Windows

Copy and paste the activation code into the Code entry box of the IMDG Code program and press the enter key.



The IMDG Code Splash screen will be displayed and your program will now run.



If you ever need to find your serial number, click the Help menu and then select About IMDG. This will display an information box showing your program version number and the serial number for this computer.

Re-displaying your program serial number

Select **About IMDG** in the Help menu. This will display the About IMDG Code for Windows dialogue box. Your program serial number will be displayed.

