

# IMDG Code for Windows Network Installation

---

IMDG Code for Windows can be easily installed on a on a single server or network share to be accessed by multiple users.

The benefit is that only the single installation needs to be maintained and updated when product updates are released.

A license must be purchased for each user that will access the IMDG Code for Windows.

## Installing the software

The Administrator will need to install the IMDG Code for Windows software on a server or network location that is accessible to other computers.

NOTE: The network installation does NOT have to be activated. Activation occurs on each user's workstation that will be accessing the network install.

## Creating a shortcut

Each networked computer that needs to access the software will need a "Windows Shortcut" linking to the IMDG Code for Windows.

On each computer, create a shortcut on the desktop, taskbar, or menus that will point to the location of the single installation.

For example, to create a shortcut on Windows 7 desktop:

1. Right-click the background image on the desktop
2. Select New > Shortcut

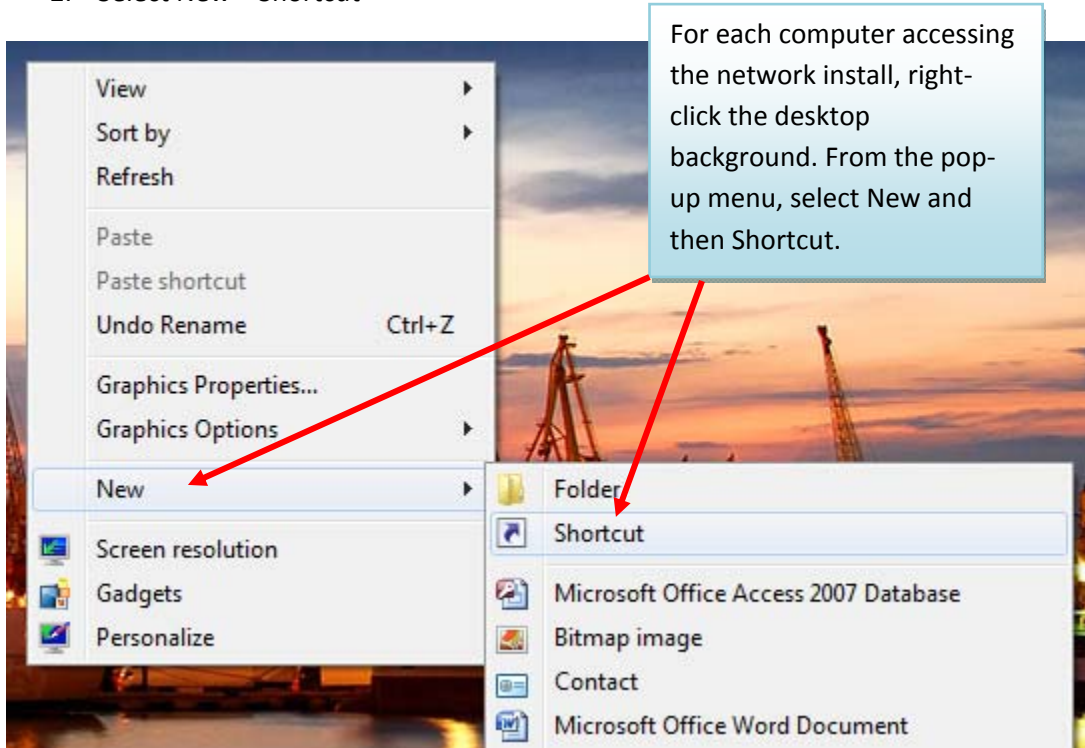


Figure 1: Create a new shortcut on each computer.

3. Browse to the location on the network (or type in the path) where the IMDG Code for Windows program has been installed.

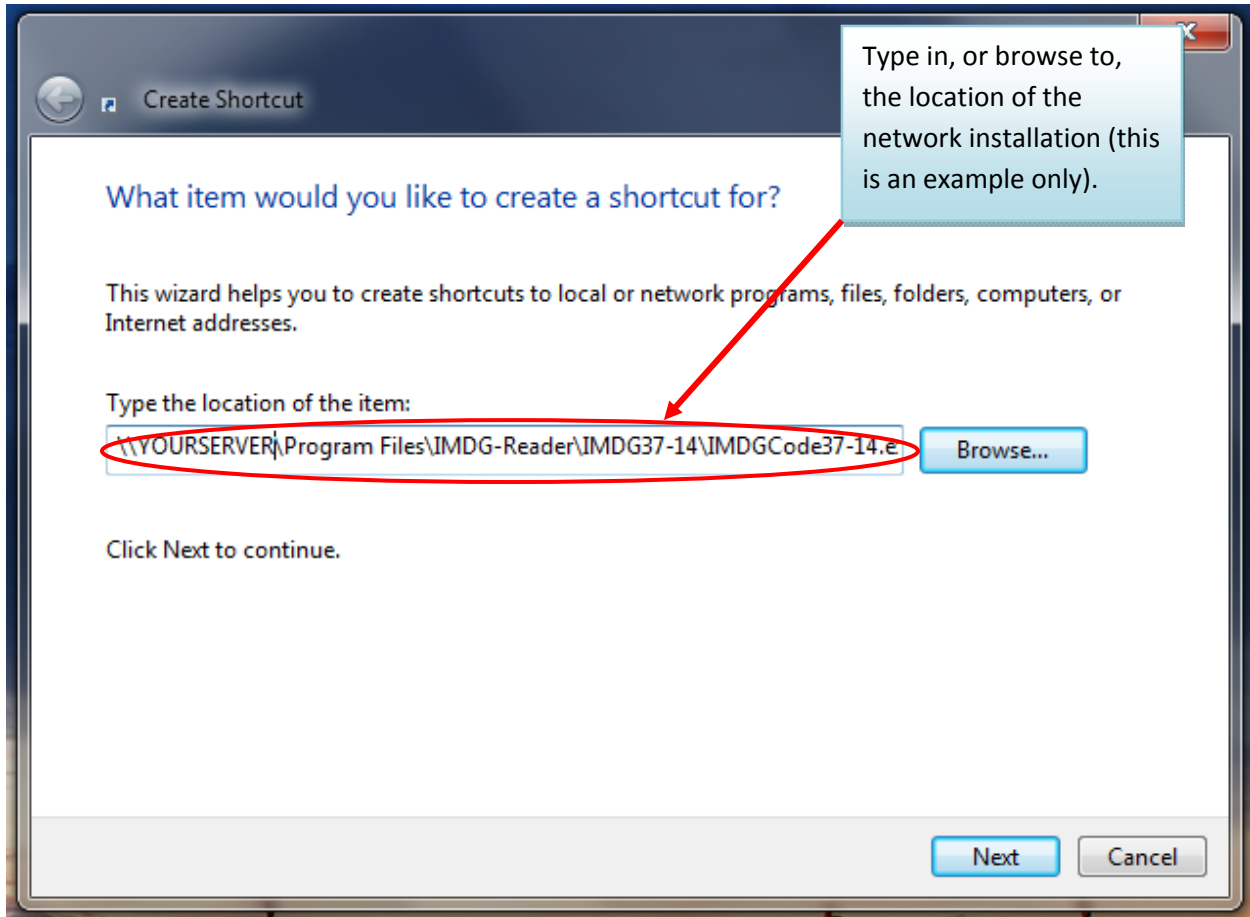


Figure 2: Type in, or browse, to locate the network installation.

4. Click Next to continue.

5. When asked “What would you like to name the shortcut?” select something simple, like “IMDG 37-14”.

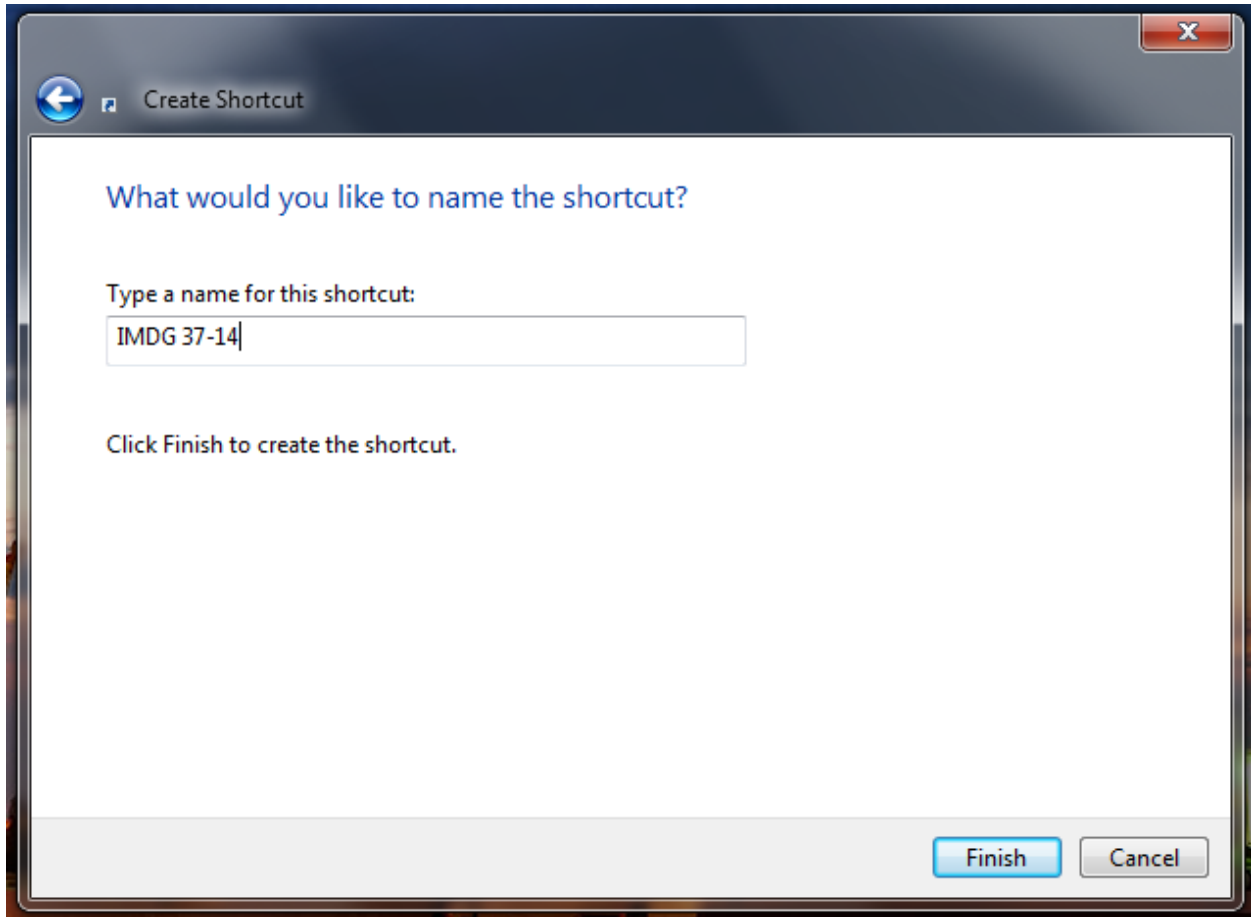


Figure 3: Name the shortcut.

6. Click Finish, and a shortcut to the network installation will appear on the desktop.



## Activation

Each user with a shortcut can now access the software from their own workstation.

NOTE: Every computer linking to the networked installation must be activated with its own unique Activation Code. (Activation is linked to a specific computer, rather than the installation point of the networked version of the software.)

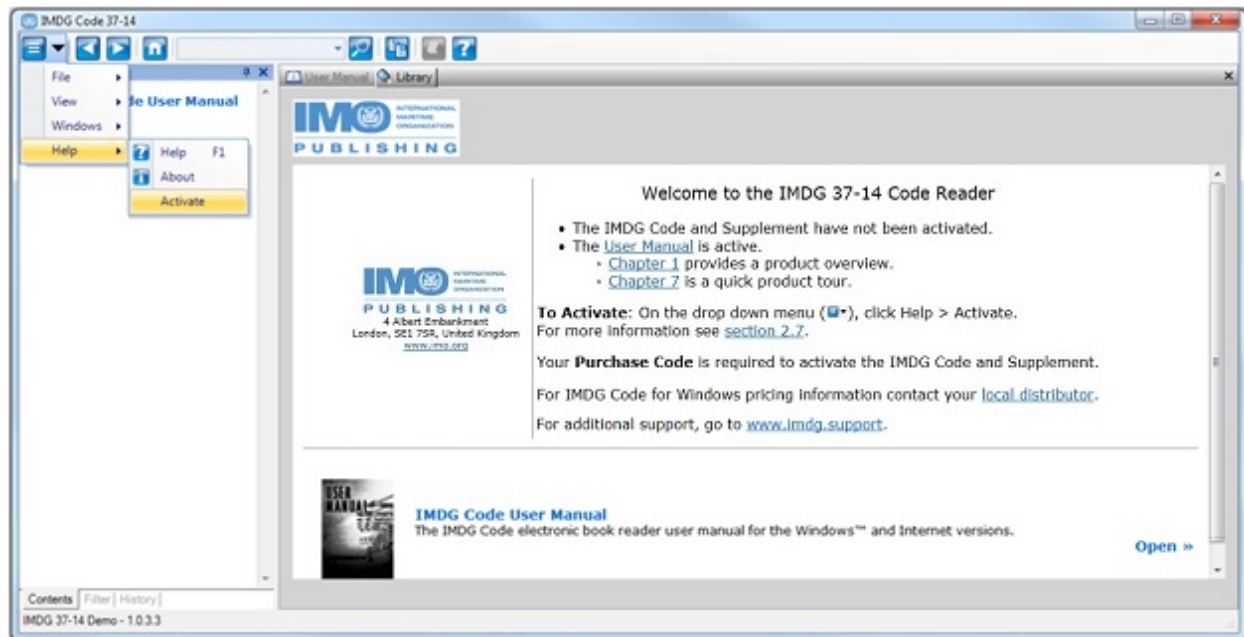


Figure 4 – Before Activation, a user's screen will look like this.

The Administrator uses the Advance Purchase Code to obtain these Activation Codes for the separate users. If more Activation Codes are needed for additional computers, they will have to be purchased.

For more information about Activation, please see the document “Activating Your IMDG Code for Windows Software”.

If you have questions, please contact Labelmaster Software's Technical Support at:

[imdgsupport@labelmaster.com](mailto:imdgsupport@labelmaster.com)

You can also find more information at:

[www.imdg.support](http://www.imdg.support)